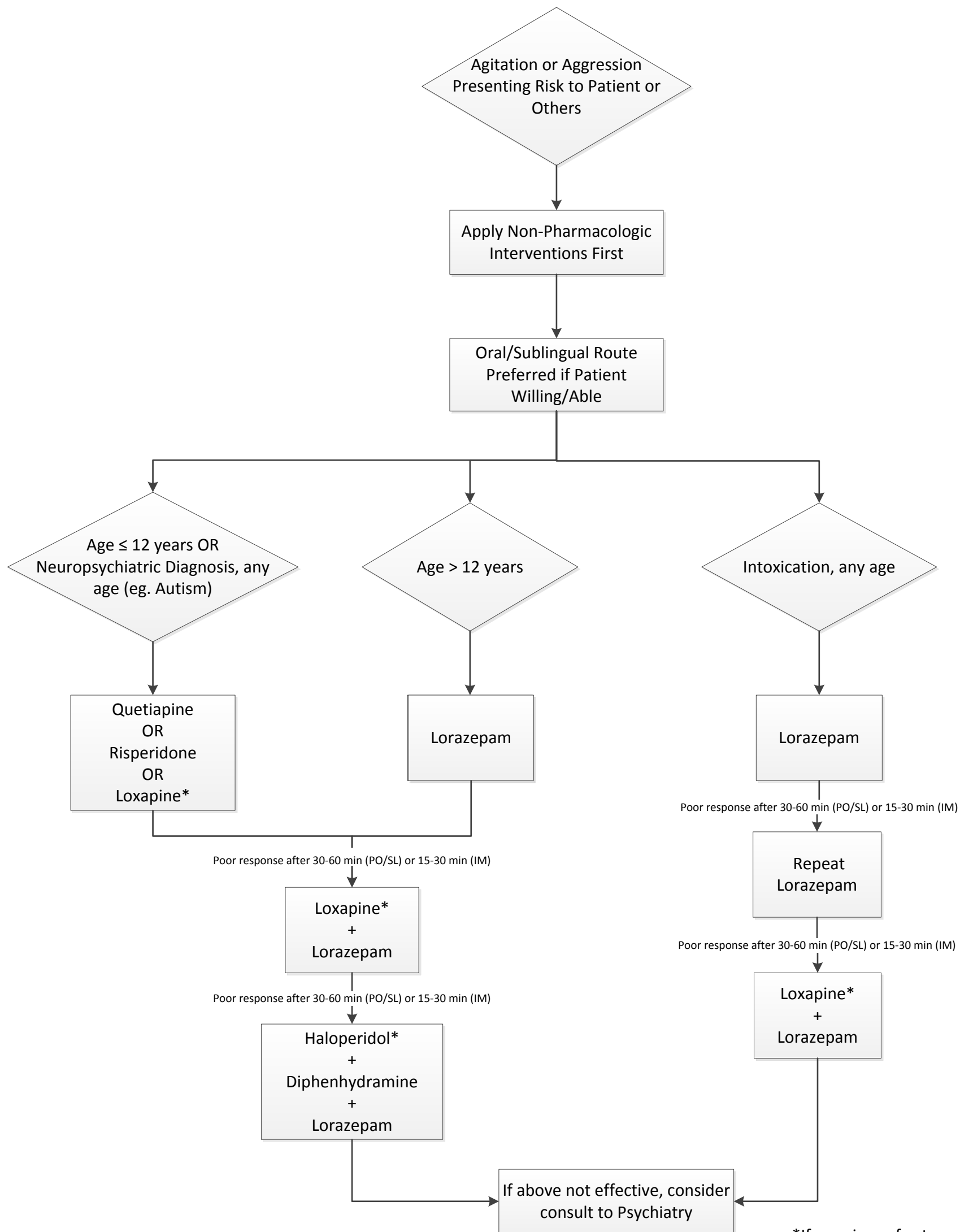


BCCH Emergency Department Management of Agitation or Aggression



*If any signs of extrapyramidal symptoms (EPS) or dystonia, administer diphenhydramine or benztropine

First-Line Medications

Lorazepam 0.025-0.1 mg/kg/dose PO/SL/IM (round to nearest 0.25 mg; max 2 mg/dose)
 Loxapine 0.1-0.2 mg/kg/dose PO/IM (round to nearest 2.5 mg; max 25 mg/dose)
 Quetiapine 12.5-50 mg/dose PO (child) or 25-100 mg/dose PO (adolescent)
 Risperidone 0.125-0.5 mg/dose PO (child) or 0.25-1 mg/dose PO (adolescent)

Rescue Medications

Haloperidol 0.05-0.1 mg/kg/dose IM (round to nearest 0.5 mg; max 5 mg/dose)
 Diphenhydramine 1 mg/kg/dose IM (max 50 mg/dose) for EPS or dystonia
 Benztropine 0.5-1 mg/dose PO/IM for EPS or dystonia. May repeat once in 30 min