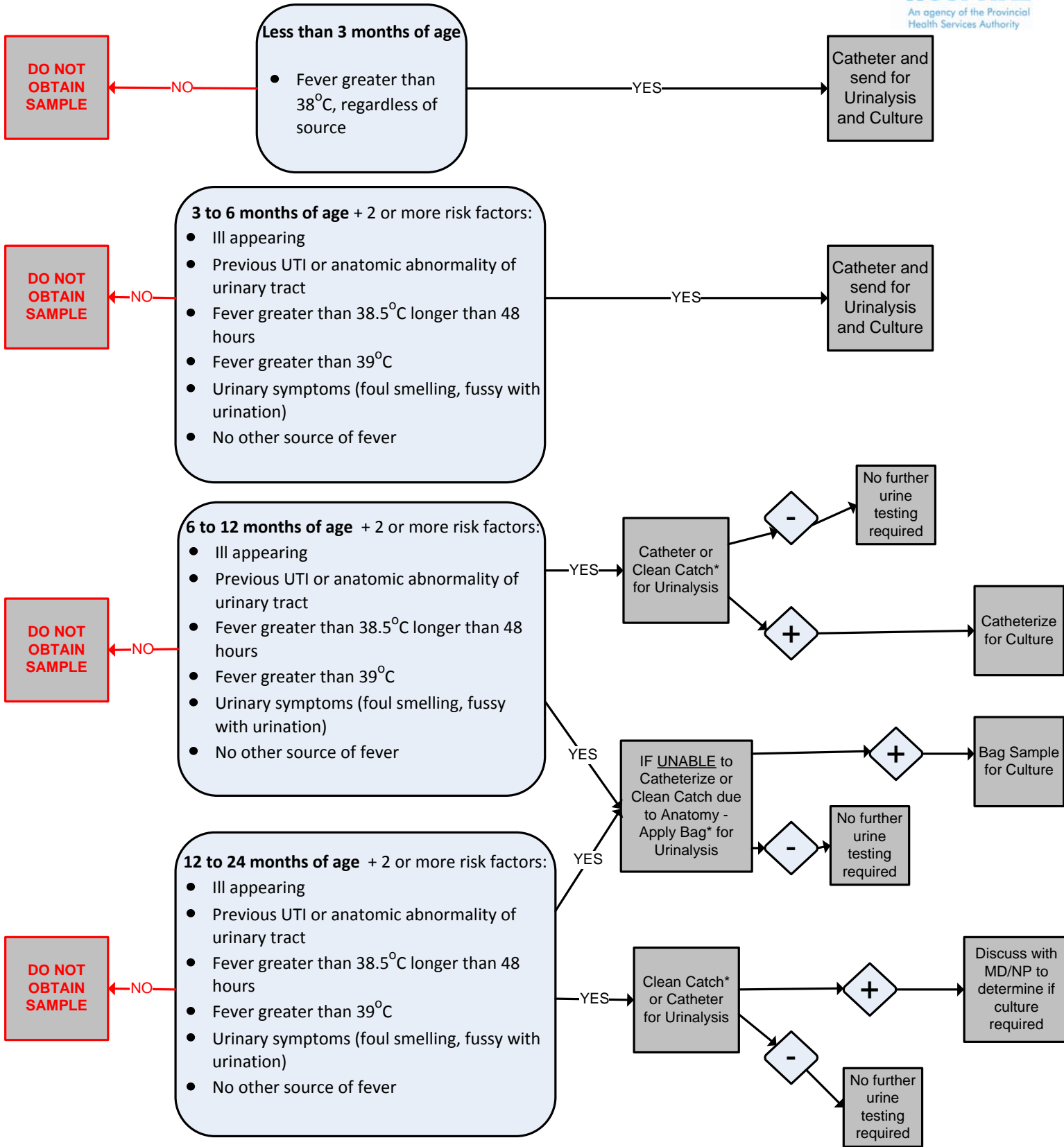


# Urine Testing - Children Less Than 24 Months of Age Clinical Practice Guideline



\* If urine sample has not been obtained with 4 hours of the patient's arrival, consider

- [1] urine catheterization
- [2] relocating patient to a waiting area in the ED
- [3] discharge with a sterile container, with follow-up with their Family Physician after the sample has been collected